

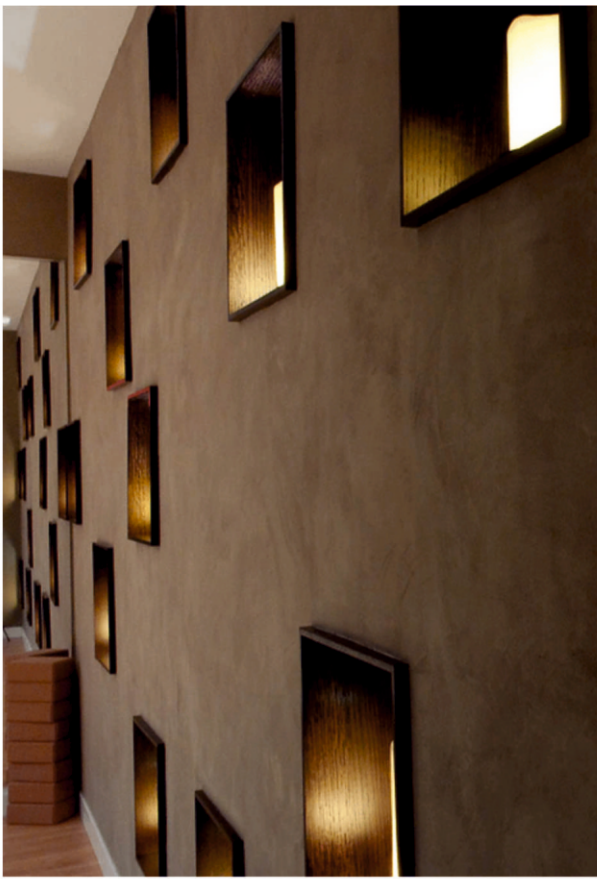


LUXTURE

- ★ 100% NATURAL
- ★ ZERO VOC
- ★ ORIGINAL
- ★ COLOURFUL
- ★ ECLECTIC
- ★ UNIQUE & AUTHENTIC
- ★ CRAFTSMANSHIP
- ★ SURPRISING

*Heritage*

Lime- N- Clay Based Plaster



## INTRODUCTION

Luxture's Lime N Clay was born from a love of nature and belief in natural, sustainable building practices. It was the result of over a decade of building and restoring with natural materials, travelling the world to learn about the traditions of Lime & Clay as a building material

The company has always believed in design being holistic and respectful of the needs of people and planet. We understand that buildings are a leading contributor to greenhouse gas emissions and our mission is to create materials that can do less harm, release less carbon and that are healthier

From our workshop in India, Luxture Surface Coating Pvt.Ltd manufacture readily available, affordable and easy to use natural clay & lime based plasters for interiors & exterior.

That Manufactured in Rajasthan- India from abundant raw materials, there are amongst the most sustainable wall finish available.

Lime-N-Clay Heritage plasters are 100% natural and non-toxic , with zero VOC emission and no synthetic, or concrete additives made from readily available, naturally abundant materials, they require no processing, only blending. Lime-N-clay, our unique blend of Natural Hydraulic lime (NHL) with mineral aggregates and colourful clays to provide a healthy, breathable finish for interior & exterior walls.

Lime-N-clay Heritage Plasters are recyclable repairable and compostable. They allow buildings to breathe, attenuate acoustics and help regulate, humidity and temperature.

Luxture's lime-N-clay plasters offer high-performance with low environmental Impact.

### What is Luxture's Lime-N-Clay Heritage Plaster?

'Lime' refers to Quicklime and is made through heating Limestone (Calcium Carbonate) at high temperatures in a kiln. The Lime (Calcium Oxide) produced & rehydrated to form Hydrated Lime (a powdery substance), or 'slaked' and matured for 2 -3 months in an excess of water to Form Lime Putty (which has a similar texture to toothpaste) — both of these products form the basis of lime plasters, mortars and washes. During the process, Carbon Dioxide is emitted, but this is, re-absorbed when the lime materials slowly dry, set and harden. The re-absorption of Carbon Dioxide completes the 'lime cycle' and makes using lime environmentally friendly and sustainable.



\* THE PICTURES ARE SHOWN HERE ONLY FOR REFERENCE PURPOSE ONLY. ACTUAL APPLICATION WILL BE DIFFER EVERY TIME.

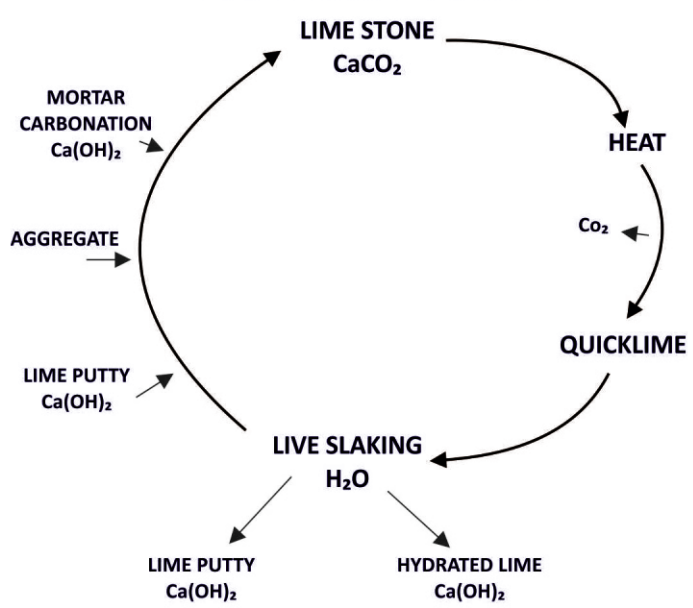


Depending on the purity of the Limestone used, types of lime can be produced with varying properties and strengths. Pure Limestone produces Non-Hydraulic Lime, meaning that it won't set under water. This is ideal to use inside the home for plasters and decorations, but does not suit outside work unless you can guarantee fine summer weather for many weeks. However, limestone with clay particles produces Naturally Hydraulic Lime (NHL), which can set (like concrete) in the presence of water due to the presence of silicates in the clay and this ideal for use outside the home for plasters and decoration. The NHL mortar plasters gain the hardens by means of absorption of CO<sub>2</sub> from the atmosphere and stands unaffected under the extreme weather conditions.

**Why Use Lime-N- Clay (Natural Hydrated Lime based plasters)**

- ▲ Carbon Neutral- But why use Natural Hydraulic lime at all? Indeed lime products do take a long time to make, apply, get dry and achieve strength. However, the benefits using lime in your home (whether it is old or new).
- ▲ Better air quality index—lime plasters absorbs carbon dioxide to get harden, this process continuous for many years until the lime converts into lime stone and achieves its ultimate strength. Such re-absorption of CO<sub>2</sub>, makes the air quality better, healthier and sustainable.
- ▲ Breathability —lime finishes allow the building to breathe and prevent damage caused by Trapped moisture.

**THE LIME CYCLE**



- ▲ Durability — if applied correctly, lime can last up to 200 years without needing to be replaced.
- ▲ Anti- Bacterial: The alkaline properties of lime are naturally bacteria repellent
- ▲ Aesthetic Appeal — Lime plasters are unique easily adoptable by weather & impress with its matt & satin finishes.

\* THE PICTURES ARE SHOWN HERE ONLY FOR REFERENCE PURPOSE ONLY. ACTUAL APPLICATION WILL BE DIFFER EVERY TIME.

## Luxture's lime-N-Clay Plasters are-

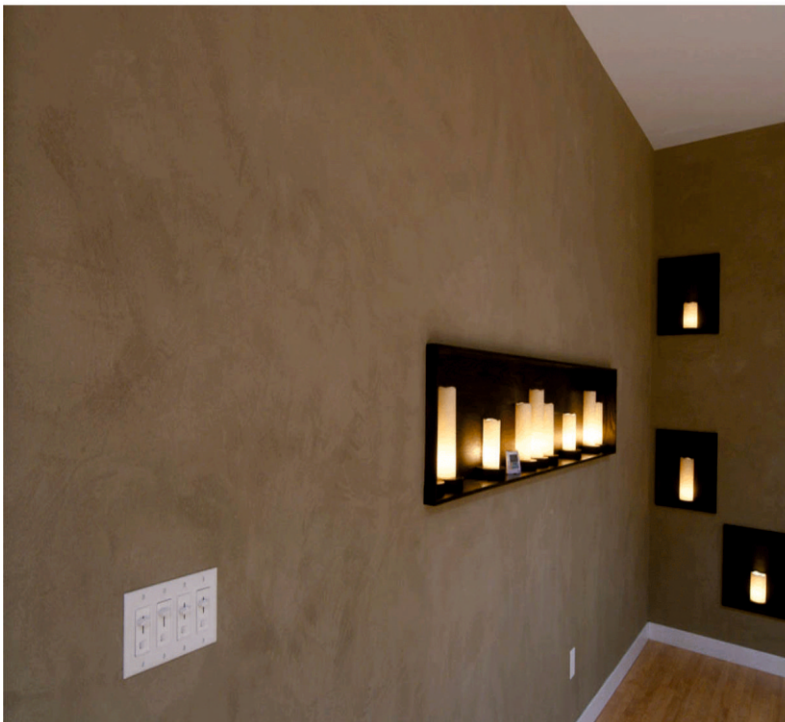
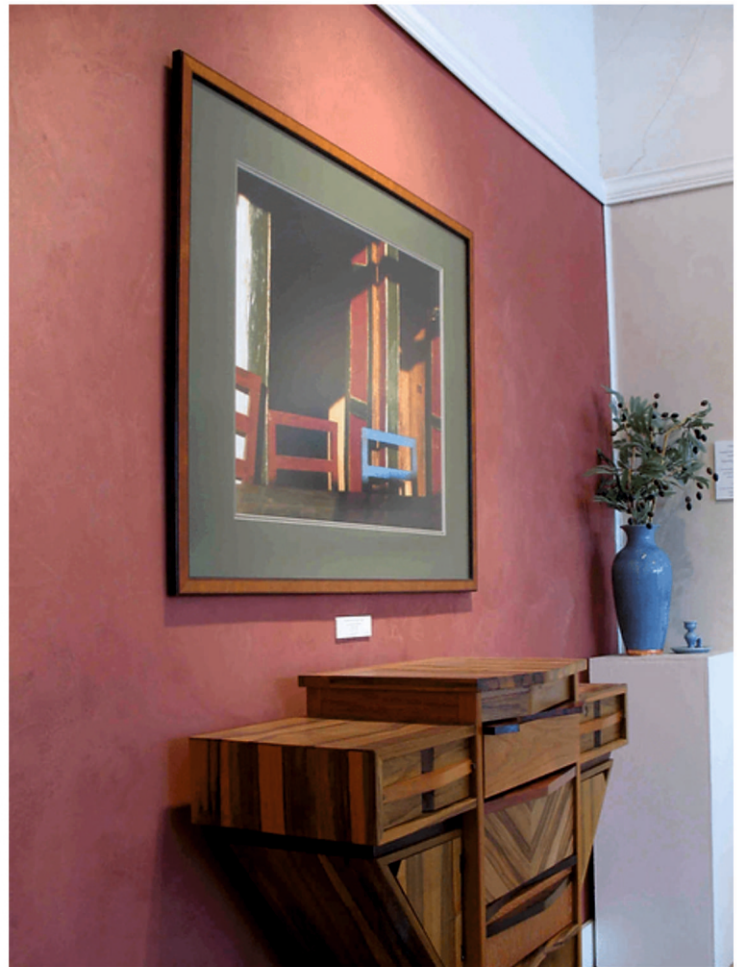
- ▲ Based on 100% Natural hydraulic lime binder, mineral aggregate & clay.
- ▲ Compostable
- ▲ Passive regulators of interior humidity
- ▲ A choice of natural colour (No synthetic pigment have been used, clays of different colours have been used instead.
- ▲ Anti- Bacterial.

It is proven that humans are effected by the quality of their environment. We spend up-to 90% of our time indoors within the micro-environments we create. The materials used within these environments impact our physical and mental health. It is impressive that we design interiors that do not harm us, or better yet, and allow us to flourish.

Luxture's Lime-N-Clay Heritage Plasters are completely inert. They are non-toxic and release zero Volatile Organic Compounds (VOCs), rather absorbers CO2 during its life span, making atmosphere healthier, weather applied interiors or at exteriors.

## Product comparison

LUXTURE'S Lime-N-clay Heritage Plaster products compare favourably with many common wall finishes such as gypsum, cement, plasters and conventional paints.



\* THE PICTURES ARE SHOWN HERE ONLY FOR REFERENCE PURPOSE ONLY . ACTUAL APPLICATION WILL BE DIFFER EVERY TIME.

**AVAILABLE SHADES**



HP-02



HP-03



HP-04



HP-05



HP-07



HP-09



HP-10



HP- WITH STRAW



\* THE PICTURES ARE SHOWN HERE ONLY FOR REFERENCE PURPOSE ONLY . ACTUAL APPLICATION WILL BE DIFFER EVERY TIME.



## ENVIRONMENTAL CREDENTIALS

Performance	Luxture's Lime-N-Clay Heritage Plaster	Conventional Plaster	Gypsum Board	Cement	Emulsion Paint
Durable	●	●	●	●	●
Breathable	●	●	●	●	●
Flexible	●	●	●	●	●
Easy to maintain	●	●	●	●	●
Repairable surface	●	●	●	●	●
Acoustic absorber	●	●	●	●	●
Colour consistent	●	●	●	●	●
Mould resistant	●	●	●	●	●
UV resistant	●	●	●	●	●
Applicable to a variety	●	●	●	●	●
	● Excellent	● Good	● Medium	● Poor	

### LUXTURE SURFACE COATINGS PVT. LTD.

#### CORPORATE OFFICE

H-114, Near Godrej Agrovet, New RIICO Industrial Area, Makhapura  
Ajmer (Rajasthan) Pin Code-305001, INDIA

#### OVERSEAS DISTRIBUTOR

#### LUXTURE INTERNATIONAL FZE

Al Hulaila Industrial Park Zone, Free Zone Warehouse,  
Shed-13, Warehouse No. 2, Ras Al Khaimah (UAE)  
Email: enquiry.uae@luxture.com  
Contact No. +971581918599

#### SALES OFFICE

DELHI: 70/A-20, Rama Road, New Delhi-110005, INDIA

JAIPUR: Near Anand Chouraha, Plot No.: 60/I Opp. K. S. Mahindra Service Center  
Jhotwara Industrial Area, Jaipur (Rajasthan), INDIA

MUMBAI: H-16, Gala No. 6, Ground Floor, New Harihar Complex, Sonavale Village  
Teh. Bhiwandi, Dist. Thane-421308 (Maharashtra)

#### SHOWROOM

JAIPUR: 105, First Floor, Ever Shine Tower, Amrapali Circle  
Vaishali Nagar, Jaipur (Rajasthan)-302021, INDIA

For more details  
scan the QR code



Follow us on



+91-8003197741 | mail@luxture.com | www.luxture.com